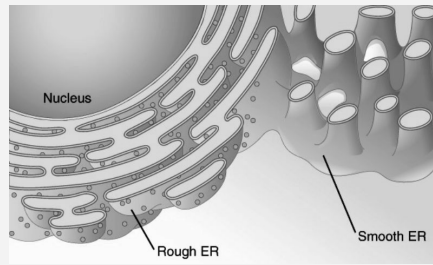


Cell Membrane/Plasma Membrane

- Outer limit of the cell
- Controls what moves in and out of the cell
- Selectively permeable
- Phospholipid bilayer
- Water-soluble "heads" form surfaces (hydrophilic)
- Water-insoluble "tails" form interior (hydrophobic)
- Permeable to lipid-soluble substances
- Cholesterol increases the fluidity of the membrane
- Includes many proteins:
 - Receptors
 - Pores, channels and carriers
 - Enzymes
 - Self-markers
 - CAMS (Cell adhesion molecules)
 - Guide cells on the move
 - Selectin: allows WBCs to anchor
 - Integrin: guides WBCs through capillary walls
- Important for growth of embryonic tissue
- Important for growth of nerve cells

Endoplasmic Reticulum



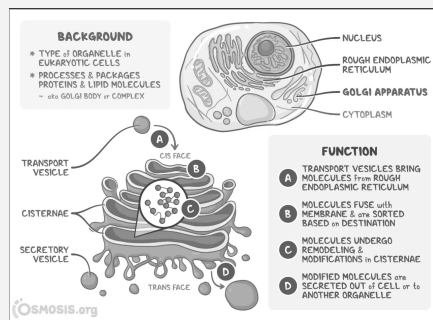
Rough ER

- Location of protein synthesis: amino acids are assembled into a chain at the surface by ribosomes and then the chain is folded into a 3D structure inside

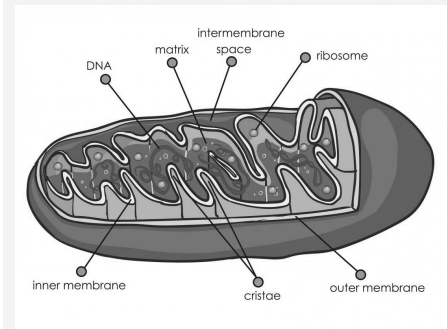
Smooth ER

- Lipid synthesis

Golgi Apparatus/Golgi Body



Mitochondria



- Membranous sacs with inner and outer membranes
- Generate energy
- Have their own genes in circular chromosome



By trebleclef28

cheatography.com/trebleclef28/

Not published yet.

Last updated 20th June, 2022.

Page 1 of 1.

Sponsored by CrosswordCheats.com

Learn to solve cryptic crosswords!

<http://crosswordcheats.com>