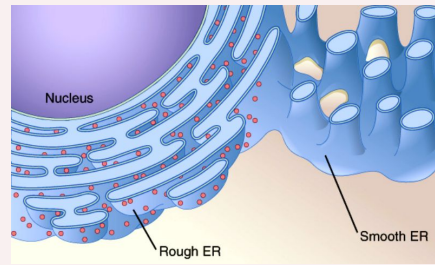


### Cell Membrane/Plasma Membrane

- Outer limit of the cell
- Controls what moves in and out of the cell
- Selectively permeable
- Phospholipid bilayer
- Water-soluble "heads" form surfaces (hydrophilic)
- Water-insoluble "tails" form interior (hydrophobic)
- Permeable to lipid-soluble substances
- Cholesterol increases the fluidity of the membrane
- Includes many proteins:
  - Receptors
  - Pores, channels and carriers
  - Enzymes
  - Self-markers
  - CAMS (Cell adhesion molecules)
    - Guide cells on the move
    - Selectin: allows WBCs to anchor
    - Integrin: guides WBCs through capillary walls
- Important for growth of embryonic tissue
- Important for growth of nerve cells

### Endoplasmic Reticulum



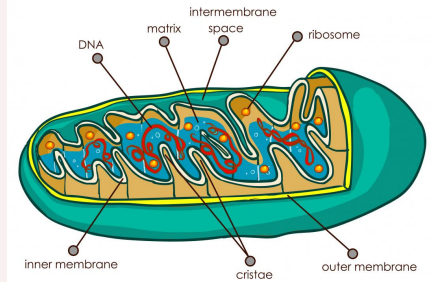
#### Rough ER

- Location of protein synthesis: amino acids are assembled into a chain at the surface by ribosomes and then the chain is folded into a 3D structure inside

#### Smooth ER

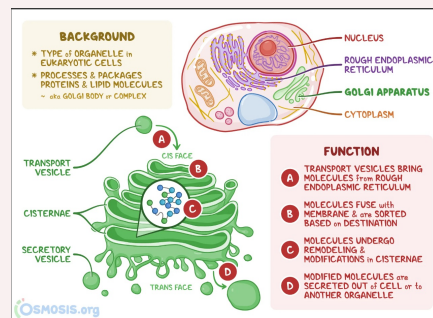
- Lipid synthesis

### Mitochondria



- Membranous sacs with inner and outer membranes
- Generate energy
- Have their own genes in circular chromosome

### Golgi Apparatus/Golgi Body



By trebleclef28

Not published yet.  
Last updated 20th June, 2022.  
Page 1 of 1.

Sponsored by [CrosswordCheats.com](http://CrosswordCheats.com)  
Learn to solve cryptic crosswords!  
<http://crosswordcheats.com>