

### Add user to a group

```
usermod -a -G kismet username
```

### List network interfaces

```
iw dev  
airmon-ng
```

### Switch to monitor mode

```
sudo iw phy phy0 interface add mon0 type monitor
```

### Change radio channel

```
sudo iw dev mon0 set freq 2437
```

### Capture traffic

```
sudo tcpdump -i mon0 -n -w wireless.cap
```

### Start/stop airmon

```
airmon-ng start wlan0  
airmon-ng stop wlan0
```

### Start scanning

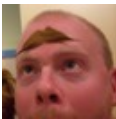
```
airodump-ng mon0
```

### Send deauthentication

```
aireplay-ng -0 1 -a mac_address_ap -c mac_address_client
```

### Kill conflicting processes

```
airmon-ng check kill
```



By **TME520** (TME520)  
[cheatography.com/tme520/](https://cheatography.com/tme520/)  
[tme520.com](https://tme520.com)

Published 30th May, 2018.  
Last updated 30th May, 2018.  
Page 1 of 1.

Sponsored by **Readable.com**  
Measure your website readability!  
<https://readable.com>