

| SQL databases |      |          |
|---------------|------|----------|
| Type          | DTUs | Max data |
| Basic         | 5    | 2 GB     |
| Standard S0   | 10   | 250 GB   |
| Standard S1   | 20   | 250 GB   |
| Standard S2   | 50   | 250 GB   |
| Standard S3   | 100  | 1 TB     |
| Standard S4   | 200  | 1 TB     |
| Standard S6   | 400  | 1 TB     |
| Standard S7   | 800  | 1 TB     |
| Standard S9   | 1600 | 1 TB     |
| Standard S12  | 3000 | 1 TB     |
| Premium P1    | 125  | 1 TB     |
| Premium P2    | 250  | 1 TB     |
| Premium P4    | 500  | 1 TB     |
| Premium P6    | 1000 | 1 TB     |
| Premium P11   | 1750 | 4 TB     |
| Premium P15   | 4000 | 4 TB     |

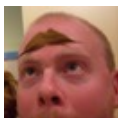
| Function App                         |
|--------------------------------------|
| Runtime stack                        |
| .NET Core 3.1                        |
| Node.js 12 LTS & Node.js 10 LTS      |
| Python 3.8 & Python 3.7 & Python 3.6 |
| Java 11.0 (Preview) & Java 8.0       |
| PowerShell Core 7.0                  |

| Virtual machines |      |           |
|------------------|------|-----------|
| SKU              | vCPU | RAM (GiB) |
| B1s              | 1    | 1         |
| B1ms             | 1    | 2         |
| B2s              | 2    | 4         |
| B2ms             | 2    | 8         |
| DS1_v2           | 1    | 3.5       |
| D2s_v3           | 2    | 8         |
| B4ms             | 4    | 16        |
| DS2_v2           | 2    | 7         |
| D4s_v3           | 4    | 16        |
| DS3_v2           | 4    | 14        |
| D8s_v3           | 8    | 32        |
| B1ls             | 1    | 0.5       |

This list only contains the 12 most popular VM types ordered by monthly cost, ascending. The full list would contain 354 types, way too long for this document.

| Locations (regions) |                     |                   |
|---------------------|---------------------|-------------------|
| Central US          | East US             | East US 2         |
| North Central US    | South Central US    | West Central US   |
| West US             | West US 2           | West US 3         |
| Australia Central   | Australia Central 2 | Australia East    |
| Australia Southeast | France Central      | France South      |
| China East          | China East 2        | China North       |
| China North 2       | Israel Central      | Switzerland North |
| Switzerland West    | Canada Central      | Canada East       |

A list of all regions can be found here: <https://azure.microsoft.com/en-us/global-infrastructure/geographies/#geographies>



By **TME520** (TME520)  
[cheatography.com/tme520/](https://cheatography.com/tme520/)  
[tme520.com](https://tme520.com)

Published 21st September, 2020.  
 Last updated 1st October, 2020.  
 Page 1 of 2.

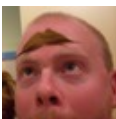
Sponsored by **Readable.com**  
 Measure your website readability!  
<https://readable.com>

| App Services            |               | Storage accounts (cont) |                                |                              |
|-------------------------|---------------|-------------------------|--------------------------------|------------------------------|
| <b>Runtime stack</b>    |               | Standard                | Storage (general purpose v1)   | Locally-red                  |
| .NET Core 3.1 (LTS)     | Node 12 (LTS) | Standard                | Storage (general purpose v1)   | Geo-redundant                |
| .NET Core 2.1 (LTS)     | Node 10 (LTS) | Standard                | Storage (general purpose v1)   | Read-access storage (RA-GRS) |
| ASP.NET V4.7            | Node 10.14    | Standard                | BlobStorage                    | Locally-red                  |
| ASP.NET V3.5            | Node 10.10    | Standard                | BlobStorage                    | Geo-redundant                |
| Java SE 11              | Node 10.6     | Standard                | BlobStorage                    | Read-access storage (RA-GRS) |
| Java SE 8               | Node 10.1     | Premium                 | StorageV2 (general purpose v2) | Locally-red                  |
| Tomcat 8.5              | Node 10.0     | Premium                 | Storage (general purpose v1)   | Locally-red                  |
| Tomcat 9.0              | PHP 7.3       | Premium                 | BlockBlobStorage               | Locally-red                  |
| JBoss EAP 7.2 (Preview) | PHP 7.2       | Premium                 | BlockBlobStorage               | Zone-redundant               |
| Python 3.8              | Ruby 2.6      | Premium                 | FileStorage                    | Locally-red                  |
| Python 3.7              | Ruby 2.5      | Premium                 | FileStorage                    | Zone-redundant               |
| Python 3.6              |               |                         |                                |                              |

| Storage accounts |                                |  |
|------------------|--------------------------------|--|
| Performance      | Account kind                   | Replication                                      |
| Standard         | StorageV2 (general purpose v2) | Locally-redundant storage (LRS)                  |
| Standard         | StorageV2 (general purpose v2) | Zone-redundant storage (ZRS)                     |
| Standard         | StorageV2 (general purpose v2) | Geo-redundant storage (GRS)                      |
| Standard         | StorageV2 (general purpose v2) | Read-access geo-redundant storage (RA-GRS)       |
| Standard         | StorageV2 (general purpose v2) | Geo-zone-redundant storage (GZRS)                |
| Standard         | StorageV2 (general purpose v2) | Read-access geo-zone-redundant storage (RA-GZRS) |

In order to get the value for the storage account type for yc simply concatenate the Performance and the short version field.

Examples: Standard\_LRS, Standard\_GRS, Standard\_ZRS



By **TME520** (TME520)  
[cheatography.com/tme520/](https://cheatography.com/tme520/)  
[tme520.com](https://tme520.com)

Published 21st September, 2020.  
 Last updated 1st October, 2020.  
 Page 2 of 2.

Sponsored by **Readable.com**  
 Measure your website readability  
<https://readable.com>