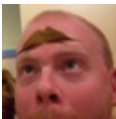


### Interface

+	Next option / Increase quantity
-	Previous option / Decrease quantity
*	Next page
/	Previous page
↑	Next option
↓	Previous option
←	Next column
→	Previous column
PgUp	Next page/screen
PgDn	Previous page/screen
F11	Toggle Fullscreen
F1	Save World Parameters from creation screen
F6	Load World Parameters from creation screen
F1-F9	Toggle selected biome while on embark map
F9	Exit certain text menus (Fortress naming, Trade goods menu, ...)
ShiftF1-ShiftF8	Jump to bookmarked map point (Set via <b>hotkeys</b> menu)
?	Help
;	Movies / Stop Recording
;;l	Load a Moving Record
;;p	Play the Active Moving Record
;;r	Start Recording (overwrites active record)
;;s	Save the Active Moving Record
Tab	Change mode (useful for enlarging Unreadable menus)
Esc	Options / Cancel
Enter	Select



By **TME520** (TME520)  
[cheatography.com/tme520/](http://cheatography.com/tme520/)  
[tme520.com](http://tme520.com)

Not published yet.  
 Last updated 7th May, 2019.  
 Page 1 of 2.

Sponsored by **CrosswordCheats.com**  
 Learn to solve cryptic crosswords!  
<http://crosswordcheats.com>

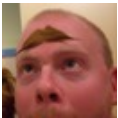
### World

Home	7	Northwest
←	4	West
End	1	Southwest
↓	2	South
PgDn	3	Southeast
→	6	East
PgUp	9	Northeast
↑	8	North
>		Down a level (Z-Axis)
<		Up a level (Z-Axis)
Ctrl 5		Down a level (Z-Axis)
Shift 5		Up a level (Z-Axis)

Hold Shift while pressing the keys to move the cursor very rapidly. Note that some users may experience "stuck keys" and other glitches unless Num Lock is off.

### Adventure

a	View announcements
A	Attack an adjacent creature / Change mode to wrestle
b	Build / create site
c	View companions
C	Combat preferences
d	Drop an item
D	Date/time



By **TME520** (TME520)  
[cheatography.com/tme520/](http://cheatography.com/tme520/)  
[tme520.com](http://tme520.com)

Not published yet.  
Last updated 7th May, 2019.  
Page 2 of 2.

Sponsored by **CrosswordCheats.com**  
Learn to solve cryptic crosswords!  
<http://crosswordcheats.com>