

LED lights

CF	Blue	Read/Write operation in progress
	Red	CPU turbo mode enabled (8MHz)
CHG	Blue	Battery 100%
	Red	Battery is charging
Battery (2 LEDs)	Flashing slowly	Battery is good
	Flashing rapidly	Battery is low

Useful MSDOS commands

Change current drive	C: D:
Change folder	cd MYFOLDER cd game\leob1 (1)
Go back to previous folder	cd ..
Go back two folders up the tree	cd ../../
List files in current folder	dir/w dir *.exe
Copy files	copy C:\foo.dat C:\arc\bar.dat copy *.txt C:\docs\
Delete files	erase C:\docs\secrets.txt
Create folders	mkdir C:\docs\bills\
Rename files	rename C:\cathya.txt C:\sophie.txt
Delete folders	rd C:\docs\hoax\
Clear the screen	cls
Switch display to 80 columns (width)	mode 80
Switch display to 40 columns (width)	mode 40
Start text editor	edit edit C:\docs\poem.txt
Move files	mv C:\docs\poem.txt C:\docs\arc-poem.txt
Run system diagnostics	msd

Useful MSDOS commands (cont)

Check filesystem scandisk

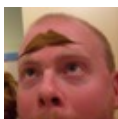
(1) Go to folder "eob1" within folder "game". Backslash is used because slash is the character MSDOS uses to manage switches/options.

Keys

Fn + F1	Speakers OFF
Fn + F2	Speakers ON
Fn + F6	Toggle CPU turbo mode
Fn + F7	Mode 80 trick to fix screen alignment (1)
Ctrl + Alt + Del	Restart the computer

(1) Sometimes after a change in resolution, the screen gets misaligned and some elements end up shifted left, out of bounds.

Book8088 version 1 (2023)



By **TME520** (TME520)
cheatography.com/tme520/
tme520.com

Published 17th December, 2023.
 Last updated 17th December, 2023.
 Page 1 of 1.

Sponsored by **CrosswordCheats.com**
 Learn to solve cryptic crosswords!
<http://crosswordcheats.com>