

Purpose of Well Tests

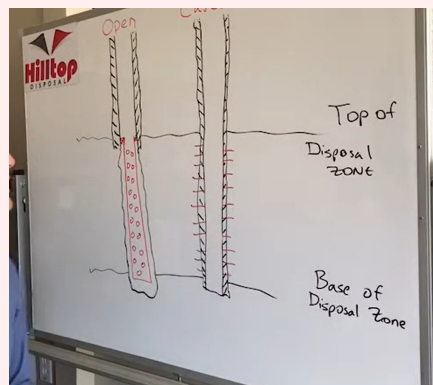
A properly conducted well test is a temporary completion of a well to acquire dynamic rate through time, pressure, and fluid property data.

Well Test Objectives

Short Term Short-term well test objectives typically involve gathering and analyzing sufficient well data to obtain a description of the reservoir system in the vicinity of the wellbore

Long Term Long-term well test objectives focus on gathering and analyzing data to obtain a complete description of the reservoir. The test time required to satisfy the test objectives varies for each reservoir. These test times are directly related to the testing costs and data needed. Therefore, testing times are a principal concern for the company conducting the test.

Open Hole x Cased Hole



C

By Tito (tito.vinicius)
cheatography.com/tito-vinicius/

Not published yet.
Last updated 30th May, 2022.
Page 1 of 2.

Sponsored by [ApolloPad.com](https://apollopad.com)
Everyone has a novel in them. Finish Yours!
<https://apollopad.com>

Equipment That I Know

Cased Hole	<p>The RTTS packer is a full-opening, hookwall packer used for testing, treating, and squeeze cementing operations.</p> <p>The internal pressure-operated (IPO) circulating valve is a single-shot circulating valve which allows circulation through the workstring before trip-out and serves as a drain valve during trip-out.</p> <p>The drain valve consists of a ported body, sliding sleeve, and rotating nut, which controls the position of the sliding sleeve.</p>
Open Hole	<p>The hollow plug impact reversing sub is used in the more difficult operations where depth and high-pressure differential across the plug sometimes make it difficult to open a conventional reversing sub.</p> <p>The HYDROSPRING® tester was developed to provide a reliable and field-proven downhole master valve.</p> <p>An extension joint provides 36 in. of free travel to aid in closing the HYDROSPRING® tester without removing weight from the packer.</p> <p>The dual closed-in pressure (DCIP) valve provides for two flows, two closed-in periods, and one reverse circulation position. This valve is run above the HYDROSPRING® tester and uses pipe rotation to operate.</p> <p>The VR safety joint is a compact, right-hand safety joint used in the drillstem testing string. It is run immediately above the packer assembly to ensure that a minimum number of tools are left in the hole if it becomes necessary to release the safety joint.</p> <p>The non-rotating (NR) expanding shoe wall packer assembly is designed to isolate the zone of interest from hydrostatic pressure.</p> <p>The flush joint anchor provides support for the weight of drillpipe needed to collapse an openhole packer.</p>



By [Tito \(tito.vinicius\)](#)
cheatography.com/tito-vinicius/

Not published yet.
 Last updated 30th May, 2022.
 Page 2 of 2.

Sponsored by [ApolloPad.com](#)
 Everyone has a novel in them. Finish Yours!
<https://apollopad.com>