

Abbreviations

```
ch = chassisname
ld = logicaldrive
ctrl = controller
pd = physicaldrive
dwc = drivewritecache
```

hpacucli utility

```
# hpacucli
# hpacucli help
```

Note: you can use the hpacucli command in a script

Display (detailed)

```
hpacucli> ctrl all show config
hpacucli> ctrl all show config detail
```

Status

```
hpacucli> ctrl all show status
```

Cache

```
hpacucli> ctrl slot=0 modify dwc=disable
hpacucli> ctrl slot=0 modify dwc=enable
```

Rescan

```
hpacucli> rescan
```

Note: detects newly added devices since the last rescan

Remove

```
hpacucli> ctrl slot=0 ld 4 delete
```

Expanding

```
hpacucli> ctrl slot=0 ld 4 add drives=2:3
```

Extending

```
hpacucli> ctrl slot=0 ld 4 modify size=500 forced
```

Spare

```
hpacucli> ctrl slot=0 array all add spares=1:5,1:7
```

Physical Drive Commands / Display (detailed)

```
hpacucli> ctrl slot=0 pd all show
hpacucli> ctrl slot=0 pd 2:3 show detail
```

Note: you can obtain the slot number by displaying the controller configuration (see above)

PD: Status

```
hpacucli> ctrl slot=0 pd all show status
hpacucli> ctrl slot=0 pd 2:3 show status
```

PD: Erase

```
hpacucli> ctrl slot=0 pd 2:3 modify erase
```

Blink disk LED

```
hpacucli> ctrl slot=0 pd 2:3 modify led=on
hpacucli> ctrl slot=0 pd 2:3 modify led=off
```

Logical Drive Commands

```
# Display (detailed)
hpacucli> ctrl slot=0 ld all show [detail]
hpacucli> ctrl slot=0 ld 4 show [detail]
# Status
hpacucli> ctrl slot=0 ld all show status
hpacucli> ctrl slot=0 ld 4 show status
# Blink disk LED
hpacucli> ctrl slot=0 ld 4 modify led=on
hpacucli> ctrl slot=0 ld 4 modify led=off
# re-enabling failed drive
hpacucli> ctrl slot=0 ld 4 modify reenable forced
```



By **tim** (The IceMan Blog)
cheatography.com/the-iceman-blog/
blog.rabin.io/

Not published yet.
Last updated 10th May, 2016.
Page 1 of 2.

Sponsored by **Readable.com**
Measure your website readability!
<https://readable.com>

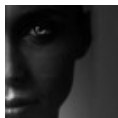
Create

```
# logical drive - one disk
hpacucli> ctrl slot=0 create type=ld drives=1:12
raid=0

# logical drive - mirrored
hpacucli> ctrl slot=0 create type=ld drives=1:-
13,1:14 size=300 raid=1

# logical drive - raid 5
hpacucli> ctrl slot=0 create type=ld drives=1:13,-
1:14,1:15,1:16,1:17 raid=5

Note:
drives - specific drives, all drives or unassigned
drives
size - size of the logical drive in MB
raid - type of raid 0, 1 , 1+0 and 5
```



By **tim** (The IceMan Blog)
cheatography.com/the-iceman-blog/
blog.rabin.io/

Not published yet.
Last updated 10th May, 2016.
Page 2 of 2.

Sponsored by **Readable.com**
Measure your website readability!
<https://readable.com>