

### PAgP

channel-group 1 mode desirable	Sets a interface into desirable mode
channel-group 1 mode auto	Set a interface into auto mode

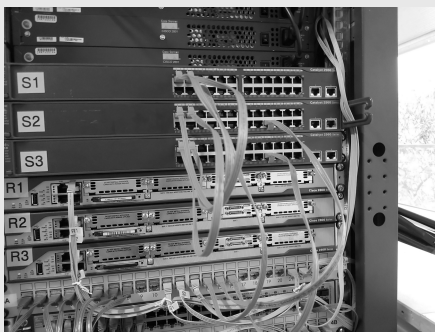
### LACP

switchport trunk native vlan <number>	Sets the native VLAN
channel-group <number> mode [active   passive ]	Sets port as active or passive.

### VLAN Configuration

vlan <number>	Creates VLAN with the given number
name <name>	Assign a name to the created vlan
switchport mode [ access   trunk ]	Sets an interface to access or trunk mode
switchport access vlan <number>	Adds a vlan onto an interface

### First Configuration



### VTP Configuration

vtp domain <domain>	Sets VTP domain
vtp password <password>	Sets the password for the VTP
vtp mode [server   client   transparent]	Sets the device mode

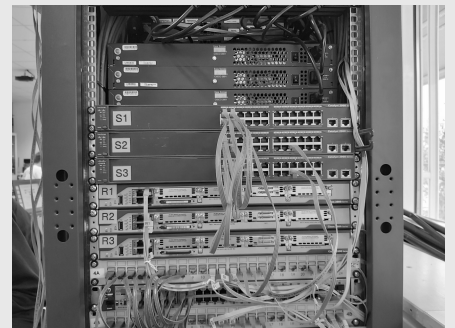
### Verification commands

show ip interface brief	Overview of all interfaces
show ip route	Show all routes
show vlan brief	Overview of all vlans and the ports in it
show interface trunk	Shows all trunks
tracert [ip]	Show if hops to an ip are correct
show vtp status	Verification for VTP
show etherchannel summary	Shows all etherchannels
show interfaces trunk	Verify existing trunks

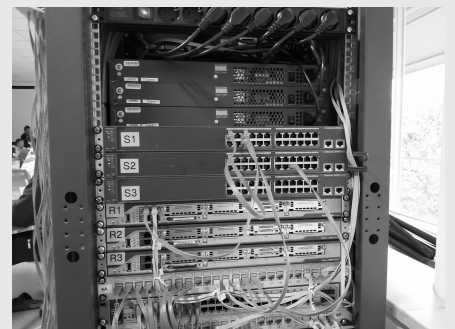
### DTP

switchport mode dynamic desirable	Creates a dynamic trunk
switchport mode trunk	Creates a static trunk
switchport mode dynamic auto	Makes the interface able to convert the link to a trunk link
switchport non negotiate	Prevents the interface generating DTP frames

### Second Configuration



### Third Configuration



C

By **stokic16**  
[cheatography.com/stokic16/](http://cheatography.com/stokic16/)

Published 13th November, 2019.  
Last updated 13th November, 2019.  
Page 1 of 1.

Sponsored by **CrosswordCheats.com**  
Learn to solve cryptic crosswords!  
<http://crosswordcheats.com>