

### Backlighting modes

**Fn + F10** Switch modes between :

- Full Backlight
- Breathing
- Raindrop
- Reactive
- Ripple
- Off

**Fn + ↑** Increase/Decrease brightness

**Fn + ↔** Increase/Decrease speed

**Fn + F10** Hold 3s to turn off all lights

### LED Zone Customization Mode

**Fn + F11** CM1 Cycle:

1. Turn on user custom zone.
2. Breathing of custom zone.
3. Turn off CM1.

**Fn + F12** CM2 Cycle (Refere to CM1 Cycle)

**Fn + PrtSc** Start record CM1

**Fn + Pause** Start record CM2

**Caps Lock + ↑** Adjust current brightness

**Caps Lock + Scroll Lock** End recording

**Important:** Adjust brightness, then set keys to be set to that color.

#### Recording Steps:

1. Start record CM1 or CM2.
2. Choose brightness, Caps Lock show the current brightness.
3. Hit an individual key to set it to the current brightness.
4. Repeat 2 and 3 to have diffrents brightness.
5. Finish recording

### Reset Factory Default

EU ISO Layout Left & Right Win keys

US ANSI Layout Left & Right Win keys

JP JIS Layout Fn + Left Win key

Hold for 3 seconds, the keyboard backlighting will flash 3 times to confirm.

### DEMO mode

Hold **Left Ctrl + Left Shift + Caps Lock** then plug the keyboard into power source.

### USB Repeat Acceleration

**Fn + F9** Function mode On/Off (Must hold for 3s)

**Fn + F1-F4** Repeat Delay 1x, 2x, 4x or 8x (Adjust USB repeat Delay Time)

**Fn + F5-F8** Repeat Rate 1x, 2x, 4x, 8x (Adjust USB Repeat Rate)

Can only be adjusted under **Function mode**. USB Repeat Acceleration may work differently in different applications.

### DIP Switch Functions

Fn Key Located	Left				Right			None Fn
	Ctrl	Win	Alt	Alt	Win	App (default)	Ctrl	
DIP 1	OFF	ON	OFF	ON	OFF	OFF	ON	ON
DIP 2	ON	OFF	OFF	ON	ON	OFF	OFF	ON
DIP 3	ON	ON	ON	OFF	OFF	OFF	OFF	ON

	OFF ( Default )	ON
DIP 4	N-Key Rollover mode	6-Key Rollover mode

### Switch Macro Profiles

**Fn + 1-6** Switch to profile x

- 1 : Default Key function
- 2-6: Customize Macro Key Features

### Macro Record Option

**Fn + 1-6** 0.02s, 0.1s, 0.2s, 0.4s, 0.8s, 1s

### Macro Record Option (cont)

**Fn + Ctrl** Macro Open / Shortcut keys recording (hold 3s)

Default Macro function is based on user's typing speed.

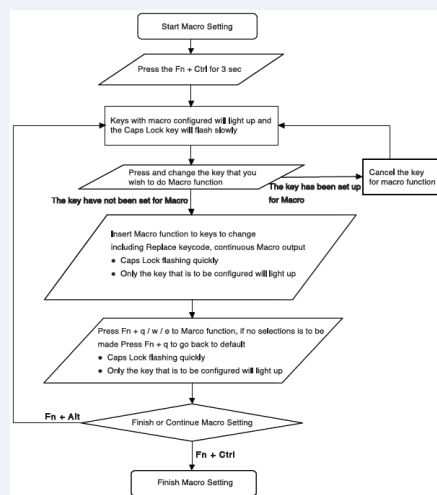
### Macro implementation option

**Fn + Q** Start macro on key press

**Fn + W** Start macro repeatedly on key press until press again to stop

**Fn + R** Repeat macro while key pressed

### Marco Diagram



Exemple: Press **Fn + A** to insert [Ducky] repeatedly until released

Steps: **Fn + Ctrl** for 3s → **Fn + A** → Insert Ducky → **Fn + E** → **Fn + Ctrl**

