

Download and installation

| | |
|---------------------------------|---|
| The game | http://openarena.ws |
| The editor (Win32) | https://goo.gl/UyXRUI |
| The editor (Win64) | https://goo.gl/gBQSGC |
| The editor (Source code) | https://github.com/Garux/netradiant-custom |
| BSPC | https://github.com/sago007/bspc/releases/download/v2016.6.28/sago007_bspc_2016-06-28.zip |
| Gamepack (0.8.8) | https://github.com/NeonKnightOA/oaassets/tree/master/tools/gamepacks/netradiant-oa088 |
| Gamepack (SVN r951) | https://github.com/NeonKnightOA/oaassets/tree/master/tools/gamepacks/netradiant-oasvn951 |
| Mapping resources and tutorials | http://openarena.wikia.com/wiki/Mapping_manual |

UPDATED Oct 8, 2017

- 1) Download OpenArena 0.8.8 or build dev version with *svn* <https://openarena.ws/svn>.
- 2) Download the editor and unzip.
- 3) Go to the gamepack page you wish to download. Click on "Clone / Download" and unzip in the Editor's location.
- 4) Make sure /home/.openarena/baseoa (Linux) or Users/<yourusername>/AppData/Roaming/OpenArena/baseoa (Win7 onwards) folder is clean.
- 5) Build *bspc* or download it from somewhere.

Basic configuration (Edit → Preferences)

| | |
|--------------------|---|
| Global | Enable Logging |
| Global → Game | Show Global Preferences (to check you're going to map for OA) |
| Interface → Layout | Choose C/XY/XZ/YZ (third from left) Check that all checkboxes are selected. |
| Settings → Brush | Enable Snap planes to integer grid and Always use caulk for new brushes. |

Basic configuration (Edit → Preferences) (cont)

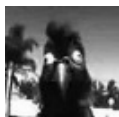
| | |
|---------------------|--|
| Settings → Camera | Disable Enable far-clip plane. |
| Settings → Clipper | Enable Clipper tool uses caulk. |
| Settings → Build | Enable Build Process Monitoring and Stop Compilation On Leak |
| Settings → Autosave | Enable Autosave and Save snapshots. |

First time open: Choose **Open Arena** as game and look for the folder of your uncompressed 0.8.8/built dev version next.

Alternative projection: Allows the editor to open maps created with older editors. Go to *Edit → Preferences* then to *Settings → Brush* and check *Use alternative texture projection (primitives)*.

The 10 Mapping Commandments

1. Thou shalt ALWAYS plan your map before opening the editor. Remember to also bear in mind the limitations of the game you're mapping to (physics, weaponry, etc).
2. Thou shalt NOT place KEY GAME OBJECTIVES (flags, obelisks, control points) in areas only reachable throughout trickjumping. It creates unnecessary imbalance giving unfair advantages to humans, especially if they involve trickjumping. Key game objectives should be available to everyone on equal foot, regardless of skill level, PERIOD.
3. Thou shalt NOT make trickjumping mandatory in order to navigate the map. Try to get scale right before sitting down and doing things. Maps should be navigable by both humans and bots. And speaking of botplay, refrain from sealing areas of your map for specific gametypes, as they may confuse the bots!
4. Thou shalt ALWAYS handle weapon/item placement with care. The powerfulness of the weapons should match how riskful is to get them. The players should work hard in order to get that sweet BFG of mass destruction! Also refrain from placing ammo near their respective weapons or too many powerful items at near-distance.
5. Thou shalt NOT limit the powerfulness of overpowered items by modifying the item's properties.



By NeonKnightOA

Published 9th November, 2015.
Last updated 8th October, 2017.
Page 1 of 2.

Sponsored by **Readable.com**
Measure your website readability!
<https://readable.com>

The 10 Mapping Commandments (cont)

Doing so messes with the player's natural timing of the items. Better limit the weapons' powerfulness with the map itself.

6. Thou shalt NOT go overboard with (and abuse) dynamic features (traps, movable/triggered platforms/"trains", doors...) or shaders.

They hurt the flow of your map if handled in a careless way. Bear in mind the limitations of the game (framerates, connectivity, etc) and be smart and conservative with them! Also, tons of transparent and stage-based shaders make your map's performance slow as hell.

7. Thou shalt NOT rely on global ambient lighting

It. Is. Lazy. Ambient lighting makes the map look washed up. This, however, doesn't mean that your map also needs to be dark. Take your time to lit your map properly and adjust the map's lights until it looks reasonably well lit without looking too washed up.

8. Thou shalt NOT unbalance asymmetrical CTF maps

Give the same weaponry/itemry to both teams. If a team has an advantageous feature then work a counterfeature so the other team can stand against their enemies. After all, "balance in a multiplayer map means symmetry in opportunities to win, not necessarily layout".

9. Thou shalt NOT force your map to work with any gametype

Better start with one main gametype and then add the gametypes it can support without problems.

10. And most important of it all: THOU SHALT MAKE SURE YER MAP PLAYS AT ALL!

Nobody (except server trolls) wants to play a map which crashes the game.

The 10 Radiant Commandments

1. Thou shalt ALWAYS use common/caulk for new brushes

It saves time by you only needing to texture the sides of the brush you want. The options *Clipper tool uses caulk* and *Always use caulk on new brushes* are your friends.

2. Thou shalt handle patches with love

If you want to create smooth curves, patches are the most efficient way to go about this. Also, patches get along well with Hint brushes. Also, you should use Bevels instead of Endcaps or Cylinders. Vertex manipulation is your friend!

3. Thou shalt ALWAYS mapmodel thy complex decorative brushes if ye need to use them a lot

If the "model" is complicated and cannot be easily created via brushes then use models. No second thoughts.

4. Thou shalt NOT make a map composed by over 90% of structural brushes

The 10 Radiant Commandments (cont)

Bad use of structural brushes adds compilation time and screws up VIS, making the game to render what it isn't supposed to render. The only brushes which must be kept marked as Structural are those which seal the map from the void and those which are meant to block VIS. Everything else must be made detail.

5. Thou shalt ALWAYS use the brush clipper and vertex editing tools instead of CSG Subtract and CSG Hollow.

CSG Subtract and CSG Hollow are lazy tools which create more problems than necessary. Manual modification of brushes is a far better option, as well as it being slightly better for optimization purposes. Not to mention that it will look a lot cleaner too.

6. Thou shalt ALWAYS match the vertex points of thy brushes and NEVER use grid sizes lower than 8.

Unless you want to painfully deal with T-junction errors, sparklies, and all kinds of avoidable glitches.

7. Thou shalt NOT abuse of doors, areaportals and hint brushes in thy map

If your map has overdraw problems, you can use them mainly for VIS stage optimization in creating clever portals so that large portions of a map that you can't see does not get rendered. Incorrect use of these tools can produce worse results instead of better results.

8. Thou shalt NOT workaround thy leaks by encasing thy map into a hollow block

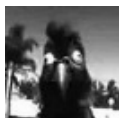
With leaks, better seal the hulls yourself (use Pointfiles). With skies, better reduce the space and use sky shaders, otherwise tris count will get high! In other words: FIX THY LEAKS, YE BASTARD!

9. Thou shalt name thy map differently for every new version released.

Naming conventions (a3, b4, v2) also help trace bugs with newer releases which weren't in the older versions.

10. Thou shalt ALWAYS include an .aas file with thy map

The odds of your map ending up in a server you don't own are close to null. With BSPC doing the job for you, you have NO excuses. And even when there are issues with limitations, there's a way to workaround this.



By NeonKnightOA

Published 9th November, 2015.
Last updated 8th October, 2017.
Page 2 of 2.

Sponsored by **Readable.com**
Measure your website readability!
<https://readable.com>