

Introduction to Power BI

Microsoft Power BI is a collection of software services, apps, and connectors that work together to turn unrelated sources of data into coherent, visually immersive, and interactive insights.

Power BI lets you connect to data sources, visualize (or discover) what's important, and share that with collaborators or an audience.

Use Power BI - Common steps

1. Bring data into Power BI Desktop, and create a report.
2. Publish to the Power BI service, where you can create new visualizations or build dashboards
3. Share dashboards with others
4. View and interact with shared dashboards and reports in Power BI Mobile apps

Basic - Use the Power BI Service (SaaS) - Apps

Go to: <https://powerbi.microsoft.com>

Apps are an easy and popular way to quickly create visuals in Power BI

An app is a collection of preset, ready-made visuals and reports

Quick and easy: you just have to press a few buttons or make a few comments, and you're quickly served a collection of entrees designed to go together, all presented in a tidy, ready-to-consume package.

1. Connect to data. select the Get Data button in the lower-left corner of the home page.

Basic - Use the Power BI Service (SaaS) - Apps (cont)

For software services like github, salesforce or google analytics, the Power BI service provides a collection of ready-made visuals pre-arranged on dashboards and reports

Pre-arranged visuals are known as **apps**

2. Update APP data in the Power BI service

Update immediately by clicking the update icon

Or to configure update settings, select the schedule update icon for the dataset, and use the menu that appears

Datasets tab is selected on the Settings page that appears. In the right pane, select the arrow next to Scheduled refresh to expand that section. The Settings dialog box appears on the canvas, letting you set the update settings that meet your needs.

Power BI Usages

Create quick insights from an Excel workbook or a local database

Extensive modelling

Real-time analytics

Custom development

Personal reports and visualization

An analytics and decision engine to inform group projects, divisions, or entire corporations

Basic building blocks of Power BI

Microsoft Power BI can be broken down into a few basic building blocks. Even seemingly complex things are built from basic building blocks

Visual Graphical representation of data, like a chart, a color-coded map

Visualizations Might be simple, like a single number that represents something significant

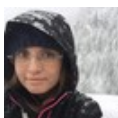
Might be visually complex, like a gradient-colored map that shows voter sentiment about a certain social issue or concern

Goal of a visual is to present data in a way that provides context and insights that are difficult to see from raw data

Datasets

A collection of data that Power BI uses to create its visualizations

Can also be a combination of different sources, which you can filter and combine to provide a unique collection of data (a dataset) for use in Power BI



By **Natalie Moore**
(NatalieMoore)

cheatography.com/nataliemore/
www.jchmedia.com/

Published 15th September, 2022.
Last updated 15th September, 2022.
Page 1 of 2.

Sponsored by **ApolloPad.com**
Everyone has a novel in them. Finish Yours!
<https://apollopadd.com>

Basic building blocks of Power BI (cont)

Examples of connections available: Excel or a Microsoft SQL Server database, SharePoint Lists, in Azure or Oracle, or in a service like Facebook, Salesforce, or MailChimp

Access datasets through data connectors

Recommended to filter data before bringing it into Power BI to enable focus

Reports

A collection of visualizations that appear together on one or more pages

Reports can be created in the Power BI service, or in Power BI desktop

Reports let you create many visualizations, on multiple pages if necessary, and let you arrange those visualizations in whatever way best tells your story.

Dashboards

A report that can be shared with others

Other users or groups interact with your dashboards when they're in the Power BI service or on their mobile device

Tiles

A single visualization on a dashboard

Basic building blocks of Power BI (cont)

Can be moved around when creating or editing the dashboard

Can't be moved around when only viewing or consuming the report

Power BI parts

Power BI consists of

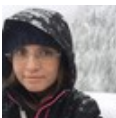
Desktop App Microsoft desktop application "- Power BI Desktop"

Service App An online SaaS (Software as a Service) service called the (SaaS) Power BI service

Mobile Apps Native mobile Power BI apps for Windows, iOS, and Android.

Flow of work

A common flow of work in Power BI begins in Power BI Desktop, where a report is created. That report is then published to the Power BI service and finally shared, so that users of Power BI Mobile apps can consume the information.



By **Natalie Moore**
(NatalieMoore)

cheatography.com/nataliemoore/
www.jchmedia.com/

Published 15th September, 2022.

Last updated 15th September, 2022.

Page 2 of 2.

Sponsored by **ApolloPad.com**

Everyone has a novel in them. Finish Yours!

<https://apollopadd.com>