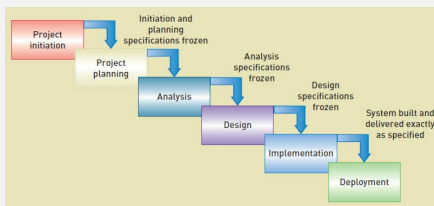


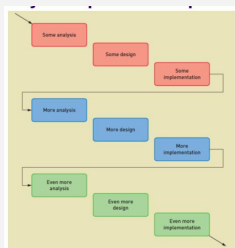
Traditional Predictive SDLC



Newer Overlapping Phases Predictive SDLC



Iterative Model



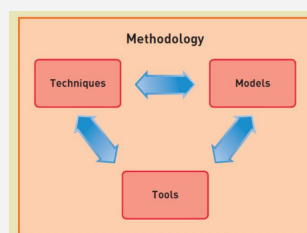
Support Activities

Maintaining the system: Fix problems/error, Make minor adjustments, Update for changes in operating systems or environments

Enhancing the system: Add desired functionality, Add or change functionality to comply with regulations or legislation

Supporting the users: Ongoing user training, Help desk

Methodology



Two Approaches

To Software Construction and Modeling:

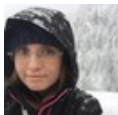
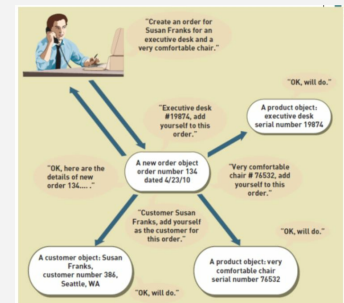
1. The Structured Approach

Earlier approach. Assumes a system is a collection of processes that interact with data. Structured analysis, design, and programming

2. The Object-Oriented Approach

More recent approach. Assumes a system is a collection of objects that interact to complete tasks. OO analysis, design, and programming

The Object-Oriented Approach



By Natalie Moore
(NatalieMoore)

cheatography.com/nataliemoore/
www.jchmedia.com/

Published 31st May, 2015.
Last updated 13th May, 2016.
Page 1 of 1.

Sponsored by [Readable.com](https://readable.com)
Measure your website readability!
<https://readable.com>