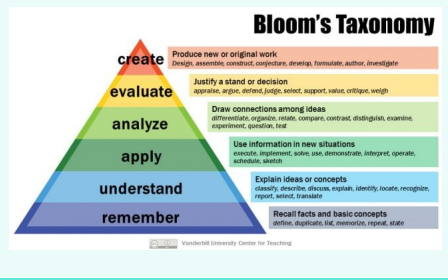


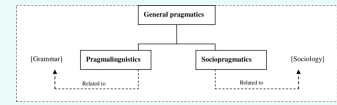
### Bloom's taxonomy



### Phonetics vs Phonology

Phonetics	Phonology
It describes how physical expressions of human speech sounds are produced	It deals with the mental aspects of sound in a language.
Symbols are enclosed in square brackets	Symbols are enclosed in the slashed bracket

### Pragmalinguistic & metagrammatic instruction



### Intonation & Stress

**Intonation** - the patterns of rises and falls (pitch variation) across a stretch of speech such as a sentence

**Stress** can be defined as syllable prominence

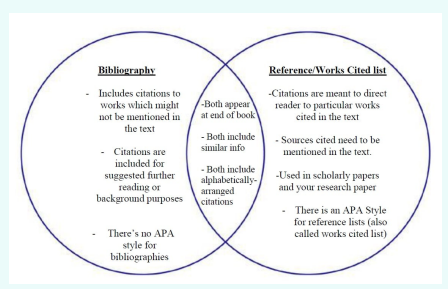
### Linguistic competence vs linguistic performance

Linguistic competence	Linguistic performance
Knowledge of words and grammar	How we use this knowledge in actual speech production and comprehension

### Critique vs Criticism

Critique	Criticism
Is selfless (respects the author's goals, not what the critic wants)	Is selfish (advances critic's goals)
Is specific (e.g., your writing would be improved if you limited use of adverbs)	Is vague (e.g., I didn't really like your writing)
Focuses on the creation	Focuses on the creator
Comes from a position of expertise	Comes from a position of ignorance
Is constructive (offers improvements, what TO do).	Is destructive (what NOT to do)

### Reference list vs Bibliography



By Nargiza  
[cheatography.com/nargiza/](https://cheatography.com/nargiza/)

Published 13th October, 2022.  
 Last updated 12th October, 2022.  
 Page 1 of 1.

Sponsored by [ApolloPad.com](https://apollopad.com)  
 Everyone has a novel in them. Finish Yours!  
<https://apollopad.com>