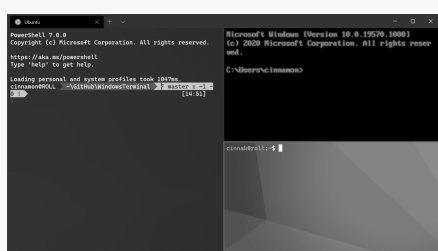


Window Terminal



Windows Terminal is nice, but has little GUI interaction. To gain it's full value you need to practice keys.

>_ Application commands

Alt-F4	Close window
Ctrl-Shift-f	Find
Ctrl-Shift-Space	Open dropdown
Ctrl-,	Open settings file
Alt-Enter F11	Toggle full screen

Tab commands

New

Ctrl-Shift-d	Duplicate tab
Ctrl-Shift-t	New tab
Ctrl-Shift-p	New tab from profile <code>p=</code> 1..9

Switch

Ctrl-Tab	Switch to next tab
Ctrl-Shift-Tab	Switch to prev tab
Ctrl-Alt-n	Switch to tab <code>n=0..9</code>

Pane commands

New

Alt-Shift-d	Split pane optimally. Active profile.
Alt-Shift--	Split pane horizontally. Default profile.
Alt-Shift++	Split pane vertically. Default profile.

Navigate

Alt-Shift-↔	Resize pane
Alt-↔	Move pane focus
Ctrl-Shift-w	Close innermost pane, tab, or window

Clipboard commands

Ctrl-c	Copy
Ctrl-v	Paste

Scrollback commands

Ctrl-Shift-up	Scroll up
Ctrl-Shift-down	Scroll down
Ctrl-Shift-pgup	Scroll page up
Ctrl-Shift-pgdn	Scroll page down

Visual adjustment commands

Ctrl=	Increase font size
Ctrl--	Decrease font size
Ctrl-0	Reset font size

*) May not work on all keyboards ↗.

Customizing key bindings

User All customizations are set in `settings.json` found via the *Settings* menu. No GUI v1.0.

Defaults Hold the *Alt*-key while pressing the open default `ts.json`. This is your own `setting.g.json`!

Keys Key bindings are set in the "key" block as:

```
{ "command": "commandName", "key": "od+ key" }
```

Actions Some commands take additional arguments to modify the behaviour. See e.g. [copy](#) ↗.

Further info

- Windows Terminal docs
- Custom key bindings



By **Martin Thøgersen**
(MartinThogersen)

cheatography.com/martinthogersen/martint.dk

Published 28th May, 2020.

Last updated 29th May, 2020.

Page 1 of 1.

Sponsored by **CrosswordCheats.com**

Learn to solve cryptic crosswords!

<http://crosswordcheats.com>