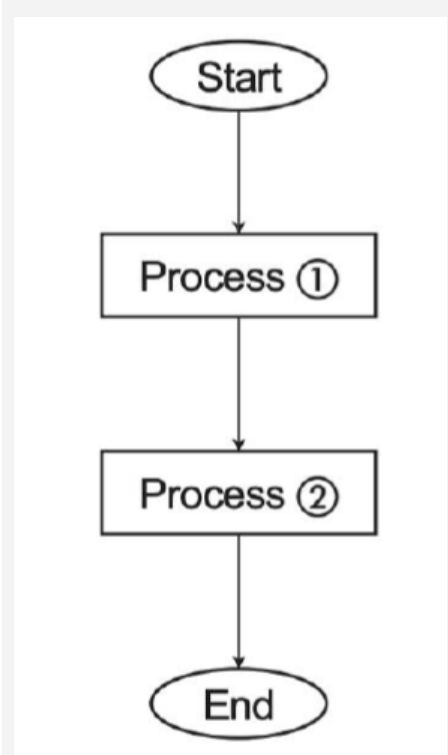


Logic Formulation		
Data Terminal	○	Start and end points of a flowchart.
Initialization	◇	Prepares memory space for data.
Input/-Output	▭	Represents data input and output.
Process	▭	Handles data manipulation and computations.
Decision	◇	Processes conditions using relational operators.
Subroutine	▭	Groups steps for a specific task.
Flow Lines	▭	Defines the logical sequence of the program.
On-page Connector	○	Links flowchart parts on the same page.
Off-page Connector	▭	Links flowchart parts across pages.

**Algorithm**  
Refers to a step-by-step processing procedure used to solve problems.

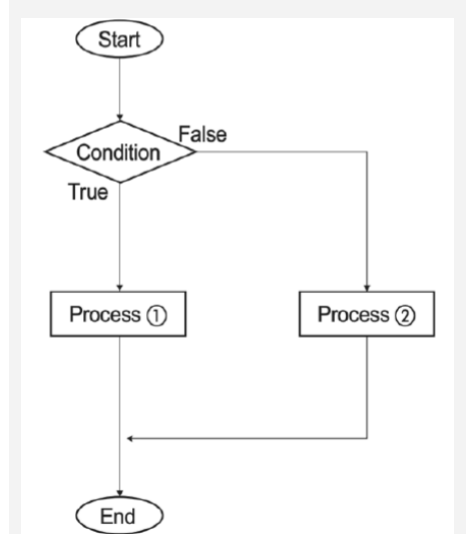
**Flowchart**  
Graphical representation of an algorithm

### Sequence Structure



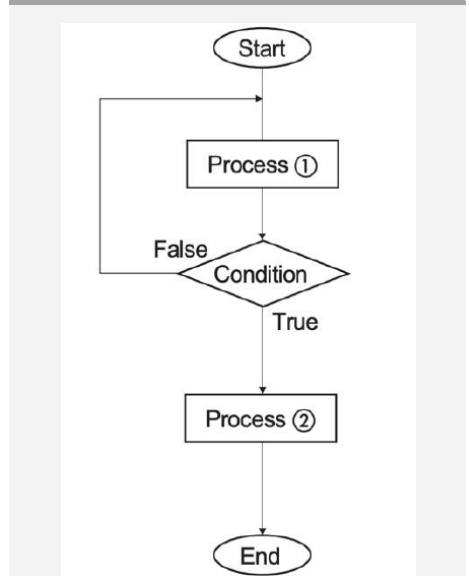
Represents a flow which is carried out in a particular order.

### Selection Structure



Represents a flow wherein processes are selected based on certain conditions.

### Repetition Structure



Represents a flow wherein a condition is carried out over and over again as long as a certain requirement is satisfied.

