

### VTP

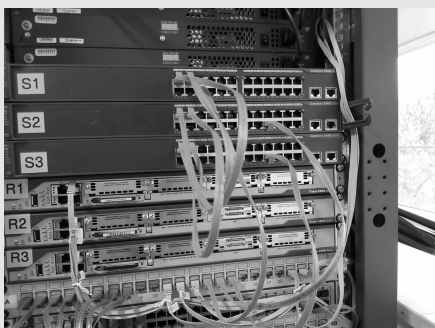
vtp domain CCNA	selects the domain for the network
vtp mode server / client	sets the mode of the device
vtp password cisco	passwords for the vtp domain
show vtp status	verification command for vtp
vtp mode transparent	set a device into transparent mode

### LACP

#### Configure LACP between two switch

switch- hport mode trunk	in a interface range
switch- hport trunk native vlan 99	set native vlan
chann- el-group 2 mode active / passive	set ports as active. on one switch active and on the other passive. commands above are the same on both switch

#### Configuration 1



Pictures provided by Kilian Stöckler

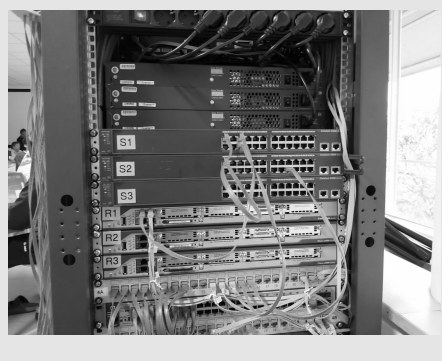
### VLAN

vlan 10	create vlan with the number 10
name Manage- ment	assign name to the previously created vlan
show vlan brief	verify vlans
switchport mode access	set an interface to access mode to join vlans
switchport access vlan 10	put interface into a vlan

### DTP

switchport mode dynamic desirable	create a dynamic trunk (you need to be in an interface to do this)
show interfaces trunk	verify existing trunks
switchport mode trunk	create a static trunk
switchport trunk native vlan 99	set the native vlan of a trunk

#### Configuration 2



### PAgP

channel-group 1 mode desirable	set a range of interfaces into desirable mode
channel-group 1 mode auto	set a range of interfaces into auto mode
show run interface f0/3	verification command
show etherc- hannel summary	show all etherc-hannels

#### Other verification commands

show ip interface brief	show overview of all interfaces
show ip route	show all routes
show vlan brief	show overview of all vlans and the ports in it
show interface trunk	show all trunks
tracert [ip]	show if hops to an ip are correct

#### Configuration 3

