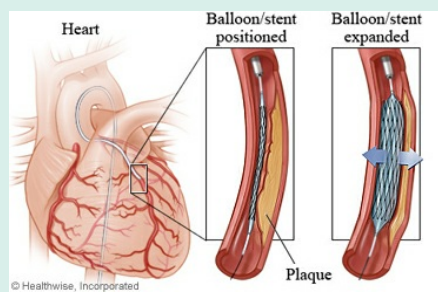


Reperfusion Therapy

Reperfusion therapy should be administered to eligible patients with STEMI and symptom onset within the previous 12 hours. PCI is considered the primary method of reperfusion, unless the patient has an absolute contraindication. In patients with STEMI who undergo PCI, the recommended goals for first medical contact to device time are 90 minutes for persons presenting to a PCI-capable hospital and 120 minutes for those presenting to a non-PCI-capable facility.

PCI



Fibrinolytic Therapy

In the absence of contraindications, it should be administered to patients with STEMI at non-PCI-capable hospitals if the anticipated first medical contact to device time at a PCI-capable hospital exceeds 120 minutes

Fibrin-specific tenecteplase (TNK-tPA)

reteplase (rPA)

alteplase (tPA)

Non-fibrin-specific streptokinase



By **jnguyen**
cheatography.com/jnguyen/

Not published yet.
Last updated 22nd September, 2019.
Page 1 of 1.

Sponsored by **Readable.com**
Measure your website readability!
<https://readable.com>