

Dementia

dementia is a neurocognitive disorder, there is a distinction between mild and major.

dementia is not a specific disease, it is an umbrella term for a range of disorders (i.e alzheimer's)

60% live in low and middle income countries

dementia Initiatives 1. dementia friends Canada 2. a dementia strategy for Canada 3. canadian consortium on neurodegeneration in aging 4. national strategy for aging

Diagnostic Challenges

lack of comprehensive assessment

20-50% of people go undiagnosed

NINCDS and ARADA first established criteria for the clinical diagnosis of Alzheimer's disease in 1984

incorporation of biomarkers (1. Tau and amyloid protein in cerebrospinal fluid , 2. Tau in brain)

Diagnostic Challenges

lack of comprehensive assessment

20-50% of people go undiagnosed

NINCDS and ARADA first established criteria for the clinical diagnosis of Alzheimer's disease in 1984

incorporation of biomarkers (1. Tau and amyloid protein in cerebrospinal fluid , 2. Tau in brain)

Alzheimer's

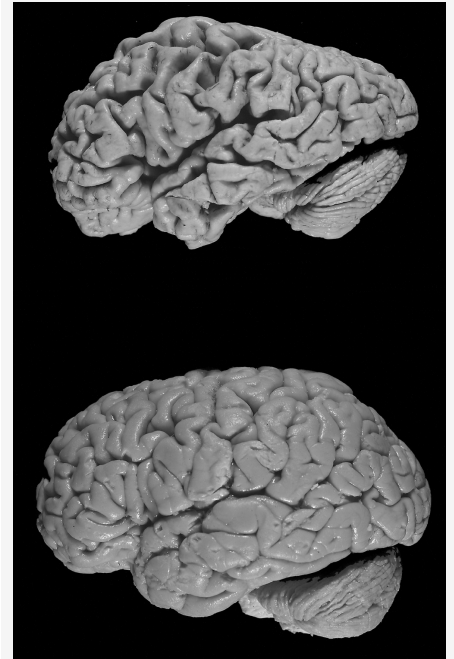
discovered by DR. Alzheimer in 1906

insidious onset, irreversible, behaviour and personality changes

shrinkage of the brain, **amyloid plaques and neurofibrillary tangles**

insidious onset, irreversible, progressive brain disease, behaviour and personality changes.

Brain with Alzheimer's



C

By **jcat123**
cheatography.com/jcat123/

Not published yet.
Last updated 11th November, 2022.
Page 1 of 1.

Sponsored by **Readable.com**
Measure your website readability!
<https://readable.com>