

What does a healthy plant need to grow?

Image	Water
Image	Air
Image	Light
Image	Warmth
Image	Space to Grow
Image	Nutrients

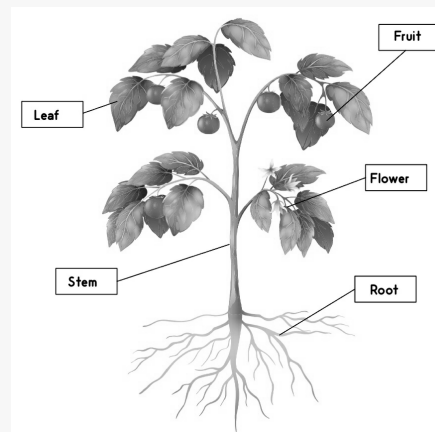
What does a healthy plant need to grow?

Water & Air	Plants take water from the soil, carbon dioxide from the air
Light	They use chlorophyll to absorb light energy from the Sun to convert water and carbon dioxide into food. The food is called glucose which is a sugar and store of energy
Warmth	Warmth is essential for growth
Space to Grow	Plants need space to grow to avoid overcrowding & competition for water, light and mineral salts
Nutrients	Nutrients are found in the soil and are absorbed through plant roots to keep the plant healthy & green

What is an unhealthy plant?

No water = leaves wilt
No light = plants become tall, weak & yellow
No warmth = plants do not grow and are damaged
Too much warmth = dry & shrivelled leaves

Draw a Plant Structure



What is the function of the leaf?

- Makes **food** through a process called **photosynthesis**
- Leaves contain cell structures called **chloroplasts** which contain chlorophyll (a green pigment). Chlorophyll absorbs **light energy** from the Sun
- Leaves are **wide** so they have more area to absorb light
- Leaves are **flat** so they can capture water

What is the function of a stem?

- **Transports water and nutrients** to rest of plant
- Holds **leaves upright** and **leans** leaves towards the Sun

What is the function of the fruit?

- Produced from flowers and the seeds of it will grow into **new plants**

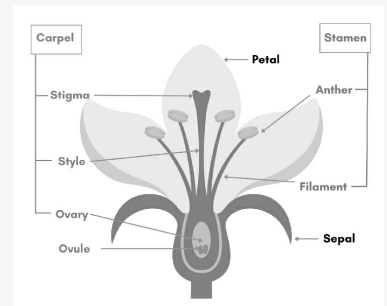
What is the function of a flower?

- **Makes seeds** for reproduction
- **Pollination** is when insects carry pollen from the **stamen** of one plant to the **carpel** of another
- Flowers are **coloured** and **scented** to attract pollinators

What is the function of the root?

- **Anchors** the plant in the soil so it doesn't blow away
- **Absorbs** water and nutrients and transports to rest of plant

Draw the parts of a Flower



List Female Parts of Flower & Function

Part	Function
Petal	Brightly coloured and scented to attract pollinators that will transfer pollen from anther of one plant to the stigma of another for pollination to occur
Carpel	Carpel is the female part of the flower containing the stigma, style and ovary
Stigma	At the top of the carpel and is sticky to receive pollen from other flowers
Style	At the base of the stigma and supports stigma
Ovary	At the bottom of the carpel and contains ovules (female sex cells)

List Male Parts of the Flower & Function

Stamen	The male part of the flower
Anther	At the top of the stamen and produces pollen (male sex cells)
Filament	At the bottom of the stamen and supports the anther

What is the function of the sepal?

A thick protective layer that **protects** the flower bud until it opens then provides **support**

What is the function of the sepal?

A thick protective layer that **protects** the flower bud until it opens then provides **support**

C

By **J4ke78**
cheatography.com/j4ke78/

Not published yet.
Last updated 8th July, 2023.
Page 2 of 2.

Sponsored by **CrosswordCheats.com**
Learn to solve cryptic crosswords!
<http://crosswordcheats.com>