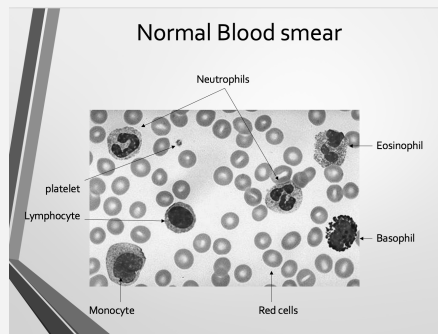


### blood smear



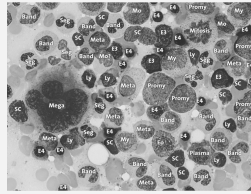
### blood cell development

begins with pluripotent stem cells

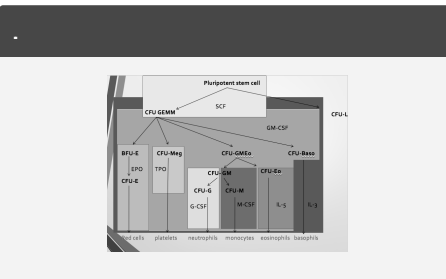
involves formation of blasts which morphologically have a high nucleocytoplasmic ratio, prominent nucleus, open chromatin configuration, basophilic cytoplasm

blasts mature in a lineage specific manner in response to growth factors & the end result is effector cells

### bone marrow architecture



E3-E4 = different stages of red cell development; Ly – lymphocyte; Mega – megakaryocyte; Promy – promyelocyte, my – myelocyte, meta – metamyelocyte, band - band form; SC – stromal cell, Seg – segmented neutrophil



### haemopoietic sites

development stage		site
embryo	0-2 months	yolk, sac
foetus	2-7 months	liver, spleen
foetus	5-9 months	bone marrow
infants		all bones - bone marrow
adults		vertebrae, ribs, sternum, skull, sacrum, pelvis, proximal ends of femur



By **ilscssoa** (holscassidy)

[cheatography.com/holscassidy/](http://cheatography.com/holscassidy/)

Not published yet.

Last updated 1st June, 2023.

Page 1 of 1.

Sponsored by **CrosswordCheats.com**

Learn to solve cryptic crosswords!

<http://crosswordcheats.com>