

VLAN

vlan <i>number</i>	generates a vlan with a certain number
name <i>name</i>	gives the vlan a name
show vlan brief	shows summary of vlans
switchport mode access	configures port as access
switchport mode trunk	configures port as trunk
switchport access vlan <i>number</i>	puts port into vlan
switchport trunk native vlan <i>number</i>	uses specific vlan as native vlan

Extended VLAN

vlan <i>number</i>	number has to be greater than 1005
vtp mode transparent	in order to use extended vlans

VTP Commands

vtp mode server	sets mode to server
vtp mode client	sets mode to client
vtp mode transparent	sets mode to transparent
vtp domain <i>domain</i>	sets vtp domain
vtp password <i>password</i>	sets password
show vtp status	shows vtp status

Etherchannel

channel-group <i>number</i> mode desirable	adds a certain port to channel group - tries to create etherchannel
channel-group <i>number</i> mode auto	adds a certain port to channel group - etherchannel only by request
show etherchannel summary	shows etherchannel summary
int port-channel <i>number</i>	enters config mode for etherchannel

Link Aggregation

channel-group <i>number</i> mode active	creates link aggregation for certain ports
channel-group <i>number</i> mode passiv	creates link aggregation for certain ports

DTP

switchport mode dynamic desirable	sets vtp mode
show interface trunk	to verify config

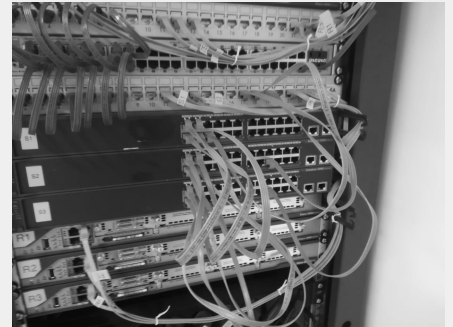
Interface Commands

int <i>interface</i>	enters config mode for this interface
int range <i>interface</i> - <i>interface number</i> *	enters config mode for several interfaces
no shut	up's port

Useful show commands

show ip interface brief	overview of all interfaces
show ip route	shows routes

Verkabelung 1



Verkabelung 2



By **fuestc16**

cheatography.com/fuestc16/

Published 12th November, 2019.

Last updated 12th November, 2019.

Page 1 of 1.

Sponsored by **ApolloPad.com**

Everyone has a novel in them. Finish Yours!

<https://apollopad.com>