

VLAN

| | |
|--|--|
| vlan <i>number</i> | generates a vlan with a certain number |
| name <i>name</i> | gives the vlan a name |
| show vlan brief | shows summary of vlans |
| switchport mode access | configures port as access |
| switchport mode trunk | configures port as trunk |
| switchport access vlan <i>number</i> | puts port into vlan |
| switchport trunk native vlan <i>number</i> | uses specific vlan as native vlan |

Extended VLAN

| | |
|----------------------|------------------------------------|
| vlan <i>number</i> | number has to be greater than 1005 |
| vtp mode transparent | in order to use extended vlans |

VTP Commands

| | |
|------------------------------|--------------------------|
| vtp mode server | sets mode to server |
| vtp mode client | sets mode to client |
| vtp mode transparent | sets mode to transparent |
| vtp domain <i>domain</i> | sets vtp domain |
| vtp password <i>password</i> | sets password |
| show vtp status | shows vtp status |

Etherchannel

| | |
|--|---|
| channel-group <i>number</i> mode desirable | adds a certain port to channel group - tries to create etherchannel |
| channel-group <i>number</i> mode auto | adds a certain port to channel group - etherchannel only by request |
| show etherchannel summary | shows etherchannel summary |
| int port-channel <i>number</i> | enters config mode for etherchannel |

Link Aggregation

| | |
|---|--|
| channel-group <i>number</i> mode active | creates link aggregation for certain ports |
| channel-group <i>number</i> mode passiv | creates link aggregation for certain ports |

DTP

| | |
|-----------------------------------|------------------|
| switchport mode dynamic desirable | sets vtp mode |
| show interface trunk | to verify config |

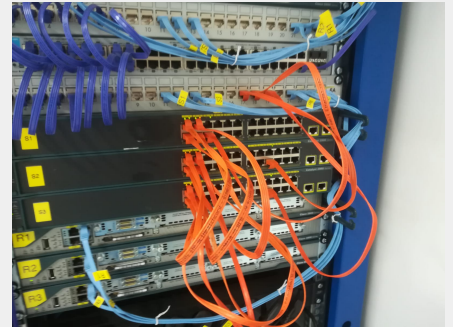
Interface Commands

| | |
|--|---|
| int <i>interface</i> | enters config mode for this interface |
| int range <i>interface</i> - <i>interface number</i> * | enters config mode for several interfaces |
| no shut | up's port |

Useful show commands

| | |
|-------------------------|----------------------------|
| show ip interface brief | overview of all interfaces |
| show ip route | shows routes |

Verkabelung 1



Verkabelung 2

