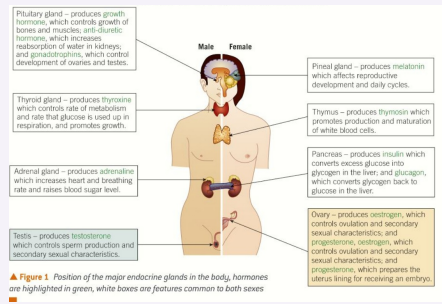


Endocrine Glands

- Makes up the **endocrine system**.
- A gland is a group of cells which are specialised to secrete chemicals (aka hormones) and are secreted directly into the bloodstream.

The Glands



Hormones

- Carry information from one part of the body to another.
- Can be steroids, proteins, glycoproteins, polypeptides, amines, or tyrosine derivatives.
- Secreted directly into the blood when a gland is stimulated.
- Once secreted, the hormones are transported in the blood plasma.
- Hormones diffuse out of the



By **ellie** (ellie123)
cheatography.com/ellie123/

Not published yet.
Last updated 11th January, 2023.
Page 1 of 1.

Sponsored by **CrosswordCheats.com**
Learn to solve cryptic crosswords!
<http://crosswordcheats.com>