

### Milestones

3 mo	<b>Social smile</b>
6 mo	Sit up, babble & coo
9 mo	<b>Stranger anxiety</b> , pull-up & cruise, <b>pincer grasp</b>
12 mo	Walk, First Words
18 mo	15+ words
2 yrs	<b>Parallel play/ 2 word phrases/</b> climb stairs (1 foot at a time)
3 yrs	<b>3 word phrases</b> , rides <b>tricycle</b> , draws <b>triangle and ●</b>
4 yrs	Draws <b>■</b> and <b>+</b>
5 yrs	Knows name & address/ hops & jumps/ counts to 10+

### Neuropsych testing

<b>IQ tests</b>	<b>Verbal IQ</b> = learned facts <b>Performance IQ</b> =visuo/motor skills
<b>WAIS-III</b>	IQ test for adults
<b>WISC-V</b>	IQ for age 5-15
<b>WPPSI-R</b>	IQ for pre-schoolers
<b>Achievement tests</b>	for school age
<b>Woodcock - Johnson Psychoed Battery</b>	reading, math, writing <b>IDs learning disability</b>
<b>Wide Range Achievement WRAT-3</b>	screens for deficits in academic skills
<b>Vineland Adaptive Behavioral Scales</b>	evals communication, living skills, social, & motor

### Personality Tests

<b>Objective Tests</b>	
MMPI	10 scales/ can detect malingering
Millon Clinical Multiaxial	"most helpful to confirm personality do"
<b>Structured Assessments</b>	
Beck Depression	brief screening in office
Hamilton Rating scale for depression	
Yale-Brown for OCD	Y-BOCs

### Projective Tests

Rorschach	ink blot
Thematic Apperception Test	shown pic & asked to describe scene
Word- Association	Jung, free association
Draw a Person	representation of self/ kids

### Cognitive Tests

#### Executive Fxning

Wisconsin Card Sorting	abstract reasoning & flexibility
Trail Making	<b>concentration &amp; executive fxning*</b> connect letters & #s in sequence

#### Visuomotor

Bender Gestalt	Copy designs w/ & w/o visualizing design
----------------	--

#### Receptive & Expressive Lang

Token Test	comprehension of instructions, grammar & attention
------------	--

### Cognitive Tests (cont)

Boston Naming	verbal confrontation & naming Alzheimer's vs depression
---------------	--

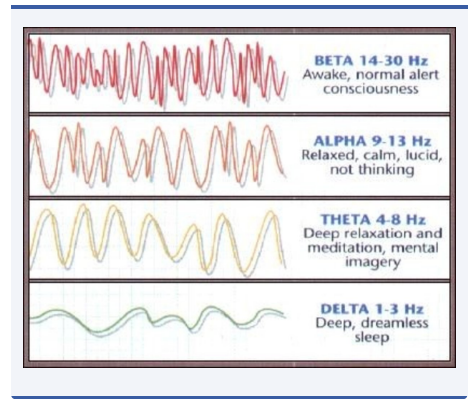
### Genetic

Fragile X	FMR1	X-linked...3-5% of ASD pts
Angelman	15q11-q13 MATERNAL	"cocktail personality", hand-flapping, ataxia, seizures
Prader-Willi	15q11-q13 PATERNAL	overeating, OCD, hypothalamic insuff
Velocardofacial	22q11.2	genetic risk for SCZ
Rett syndrome	MECP	girls, regression, microcephaly, stereotypic hand movements, seizures
Huntington Dz	Autosomal Dominant	CAG repeats
FKBP5	trauma	glucocorticoid signaling
SERT/SLC6A4	Alzheimer, MDD, PTSD	serotonin transport
ApoE2	Alzheimer	
AKT1	MJ psychosis	

### Risk/Devpt of Substance Use

Imbalance in devpt...	
sub-cortical= bottoms up	reactive to stimuli/ curvilinear devpt
pre-frontal= top down	linear pattern of devpt
Thus, kid brains	vulnerable to reward properties of subs





By **Drkgrissett**  
[cheatography.com/drkgrissett/](https://cheatography.com/drkgrissett/)

Not published yet.  
Last updated 17th May, 2023.  
Page 2 of 4.

Sponsored by **Readable.com**  
Measure your website readability!  
<https://readable.com>

### EEG

Spike & slow wave	Epileptogenic
High-amplitude slowing	Normal in kids
Global suppression	Encephalopathy

### Neuro

Upper motor lesion	<b>BABINSKI</b> , <b>HYPER</b> tonia, spastic
Lower motor lesions	Fasciculation/fibrillation, <b>HYPOT</b> onia,

### ADHD

Highly genetic	71-90% in mono/di-zygotic twin studies
Maternal smoking=risk factor	
Response inhibition	tempero-parietal & inf frontal
Pre-school	behav tx= 1st line
School-age	
Stimulant=1st line	consider EKG if family hx of cardiac
Hyperactive/impulsive	Alpha Agonist
Inattention	Atomoxetine
Depression	Bupropion

### Autism Spectrum Disorder

Def in Social & Comm	+ Restricted, repetitive interests
	-hearing test
	-screen for Fragile-X

#### Tools to dx & screen:

Autism Diagnostic Observation Scale	ADOS-2= gold standard for dx
CHAT- Checklist for Autism in Toddler	peds use for screening
Tx= ABA	Applied Behavioral Analysis

### Autism Spectrum Disorder (cont)

	considered gold standard
<b>Social-Pragmatic Communication Disorder</b>	= social & comm deficits w/o restricted interest

### Bipolar DO in kids

Same criteria as adults	1-2% prevalence
ADHD	50% co-morbidity
ASD	20% co-morbidity
Twin Studies	60-90% variance
Mania in high-risk off-spring	2-7%
FDA tx for BPAD	
Olanzapine	13+
Lithium	12+
Risperidone	10+
Aripiprazole	10+
Quetiapine	10+
TEAM (Tx of Early Age Mania Study)	
Atypical AP	68.5%
Divalproex	40%...but not FDA approved for mania in kids
Li response	35.6%

### Disruptive Mood Dysregulation Disorder-DMDD

Criteria:	severe temper outbursts
	3x/ wk .... 2/3 settings
	irritable/angry mood in between
	onset before 10 yo
	Can't co-exist w/ ODD, Int Explosive or Bipolar
	Tx targets symptoms of aggression/irritability

### MDD in kids

Same criteria as adults	May see more <b>irritability, anger &amp; somatic sx</b>
Rating Scales:	PHQ-9, CES-DC, CDI
<b>TADS</b> (Tx of Adol Depression Study)	CBT+SSRI>CBT->SSRI
SSRI	Black box warning= re increased risk of SI
<b>TORDIA</b> (Tx of Res Dep in Adol)	failed 1st SSRI switched to 2nd SSRI vs Venlafaxine (VFL) vs CBT+SSRI vs CBT+VFL
<b>TORDIA</b> outcome	CBT+med= Best outcome 2nd SSRI=VFL VFL= increased SE
<b>CBT+Interpersonal TX (IPT)</b>	Best evidence from RCTs in adol
FDA black box SSRI/SNRIs	increased risk of SI in adol & young adults

