

VHF Radio Channels

Usage	Channel
Distress, safety and calling	16
Working channels	72, 73 or 77
Weather	67
Sydney Harbour Master	12

Mayday alert

When in distress and grave and imminent danger.

Mayday x 3

This is yacht {name of vessel} x 3

Mayday {name of vessel}

{MMSI if distress alert sent}

{position of vessel}

{nature of distress}

{number on board}

Over

Pan Pan alert

When you need to send an urgent message but you're not in imminent danger.

Pan Pan x 3

All ships x 3

This is {name of vessel}

{MMSI if urgent alert sent}

{position of vessel}

{nature of distress}

{number on board}

Over

Weather Forecast Sources

Boating weather NSW 131236

Bureau of Meteorology (bom.gov.au)

Local newspaper, radio or tv

Marine rescue

Alcohol limits

Description	Limit
Commercial vessels	0.02
England	0.02
Rest of the World	0.05

Note: These limits also apply to vessels under anchor. Marina Berths, Jetties & Swings Moorings do not apply.

Man Overboard Procedure

Turn on engine & assign spotter

Sail on a reach

Tack & drop Jib

Sail back on a reach using Main as accelerator

Pick up victim (downwind if vessel is smaller)

Collision Regulations

Power gives way to sail

Port tack gives way to starboard tack

Overtaking vessel must give way

Windward vessel keeps clear on same tack

Head on, both yield to starboard

Note: In Sydney Harbour all vessels must give way to ferries.

Required Safety Equipment

Personal floatation devices for all on board

Paddles or 2 x means of propulsion

2 x buckets

Anchor

Fire extinguisher

First aid kit

Water proof torch

Overboard retrieval gear

YA rule book

Sharp knife

Orange V distress sheet

Portable nav lights & battery

Flares (Orange hand or red parachute)

Marine radio

EPIRB

Sound signals (Air horn, whistle or bell)

Distress Signals

Flares (Orange hand/floating or red parachute)

Raising and lowering arms

EPIRB

Ball over square shape

Continuous sounding of fog horn

Code flags N over C

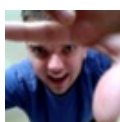
SOS light signal

Fire rocket flare straight above vessel. 15° downwind in heavy winds or at 45° in low cloud.

Sound Signals (Rule 34)

Signal	Meaning
One short blast	Altering my course to starboard
Two short blasts	Altering my course to port
Three short blasts	My engines are running in reverse
Five short blasts	What are your intentions?
One long blast entering bend	Possibly obscured to other vessels
Two long blasts, one short blast	I intend to pass on your starboard side
Two long blasts, two short blasts	I intend to pass on your port side

One long blast at interval in fog means 'Power vessel making way'. One long blast, followed by 2 short blasts at interval in fog means 'Vessel under sail making way'.



By [danielgivney](http://danielgivney.com)
cheatography.com/danielgivney/

Published 23rd September, 2014.
Last updated 23rd September, 2014.
Page 1 of 2.

Sponsored by CrosswordCheats.com
Learn to solve cryptic crosswords!
<http://crosswordcheats.com>

Fixing your position

Use a transit and measure depth below

Use bearings (2 or 3 point fix)

GPS

Radar

Passing an object on a chart

Transit and a fixed bearing

Beaufort Wind Scale

Category	Description	Wind Speeds
1	Light airs	1 - 3 knots
2	Light breeze	4 - 6 Knots
3	Gentle breeze	7 - 10 knots
4	Moderate	11 - 16 knots
5	Fresh breeze	17 - 21 knots
6	Strong breeze	22 - 27 knots
7	Near gale	28 - 33 knots
8	Gale	34 - 40 knots
9	Severe gale	41 - 47 knots
10	Storm	48 - 55 knots

Marine Weather Wind Scale

Description	Wind Speeds
Strong wind	26 - 33 knots
Gale	34 - 47 knots
Storm force	48 - 63 knots
Hurricane force	64+ knots

Note: Calculated as averages over 10 minutes. Gusts can be up to 40% higher. Waves may be twice the forecast height.

Waves & Weather Formation

Waves are living energy created by the sun

The bigger the gap between waves, the bigger the waves

Distance travelled by wave determines its energy

Types of Moorings

Colour	Usage
Yellow	Private
Orange	Commercial
Blue	Police

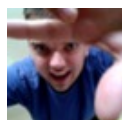
General rule is you can't moor on anybody's berth without permission from the official channels.

Types of Sails

Colour	Material
White	Dacron
Brown	Kevlar
Blue	Spectra

Types of Knots

Type	Usage
Bowline	General purpose
Sheet bend / Reef knot	Join two ropes
Rolling hitch	Take a load
Figure 8	Stopper knot
Clove hitch	Mooring
Round turn 2 ¹ / ₂ hitch	Mooring



By [danielgivney](http://danielgivney.com)
cheatography.com/danielgivney/

Published 23rd September, 2014.
Last updated 23rd September, 2014.
Page 2 of 2.

Sponsored by CrosswordCheats.com
Learn to solve cryptic crosswords!
<http://crosswordcheats.com>