

Anatomy and Physiology

Anatomy study of the structure and shape of the body and its parts and their relationships to one another

Physiology study of how the body and its parts work or function

Relationship of Anatomy and Physiology structure determines what functions can take place

Levels of Structural Organization

Chemical Level Atoms combine to form molecules.

Cellular Level Cells are made up of molecules.

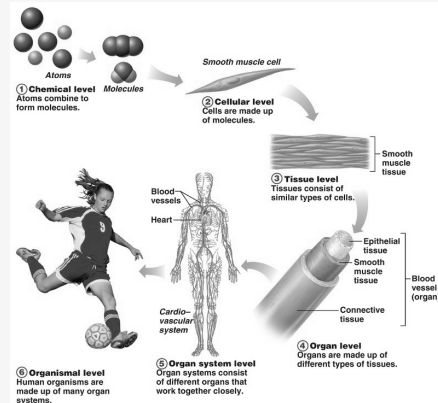
Tissue Level Tissues consist of similar type of cells.

Organ Level Organs are made up of different types of tissues.

Organ System Level Organ systems consist of different organs that work together closely.

Organismal Level Human organisms are made up of many organ systems.

Levels of Structural Organization



Organ System Overview

Integumentary System external covering of the body
skin, hair, fingernails



By **lou (crestfallen)**
cheatography.com/crestfallen/

Not published yet.
Last updated 1st July, 2022.
Page 1 of 1.

Sponsored by **Readable.com**
Measure your website readability!
<https://readable.com>