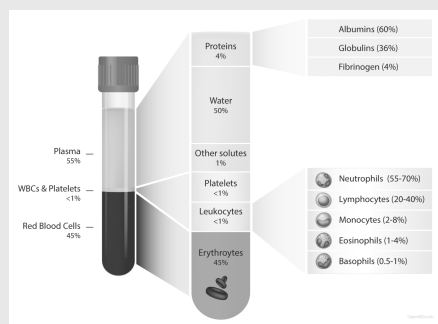


IMPORTANT REMINDERS

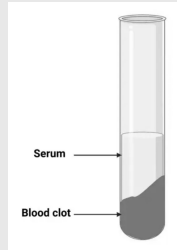
Serum	Blood W/O cells or Fibrinogen (clotting factor)
Plasma	Blood W Fibrinogen and water but ~ still NO cells
Buffy Coat	Separated blood layer containing WBCs and Platelets
MHC	Major Histocompatibility Complex
TCR	T-Cell receptor
BCR	B-Cell receptor

PLASMA ~ in EDTA tube (purple top)



- Anti-Coagulants are needed for purifying
- Can be prepared as soon as its centrifuged
- **Fibrinogen = present**
- Buffy coat can contaminate the liquidated fraction
- Composed of ions that is *representative of the circulating blood!*
- Less stable

SERUM ~ Red-Top Tube



- No Anticoagulants added
- 30 min delay for clot formation
- Fibrinogen absent
- Cleaner sample (lacks depleted cells and cell remnants)
- Contains antibodies, antigens, electrolytes and medications, hormones and microorganisms
- The study of serology involves the study of the serum as the GS

ANTIBODY CLASSES

CLASS	DESCR- PTION	NOTES
IgG	Neutra- lizing Ab	mnemonic > " <i>grandmas memory</i> " !Made later in immune response! Primary Ab in memory response Found in blood Small size (able to pass barriers easily) <input type="checkbox"/> <input type="checkbox"/> Highest in conc. in Colostrum/Blood

ANTIBODY CLASSES (cont)

	Longer half-life than IgM	
	Bind phagocytes via Fc region	<i>Opsonin</i>
IgM	<input type="checkbox"/> <input type="checkbox"/> First Ig in primary response	mnemonic > " <i>I want MINE first</i> "
	Short half-life	
	10 binding sites	> better at aggregating than IgG > Neutralizing Ab
	Large size	> can't penetrate tissue > confined to blood/lymph
	Activates <i>Compliment System</i>	
	<input type="checkbox"/> <input type="checkbox"/> High conc. ==	recent primary exposure
	No Fc receptor for IgM on phagocytes	CANNOT act as an opsonin
IgA	!Important for mucosal protection!	mnemonic > " <i>Alpacas are snotty</i> "
	Dimeric form	> has a secretory piece
		~ prevents degradation by Proteases

ANTIBODY CLASSES (cont)

~ secreted in
**MILK! (NOT
ABSORBED
THRU GUT)**

Prevents epithelial adherence of
bacti

Helps protect > GIT
**neonate
mucosa in:**

> respiratory

> UG tract

Found in: > tears, saliva,
and bile

IgE **!Important** mnemonic > '*Ew*
in adaptive resp. worms and
to parasitic allergies"
worms!

Mediates > **Anaphylactic**
Type-1 HS **Shock**

Mechanism:: 1. **B-cells** > make
IgE to Ag

2. **IgE** > binds
Mast cells on their
Fc region

**Once exposed to
Ag again:**

3. **IgE** > binds
Mast cells

~ Activates
degranulation

ANTIBODY CLASSES (cont)

4. **Mast cells** > release *histamine* &
vasoactive amines

Neonatal Immunity

	COLOSTRUM	MILK
Source of	Dam's serum	Mammary
Ab		gland
Ig	IgG (high	IgA (much
Compos-	conc.)	smaller
ition		conc.)

**Prod.



By Carsonmccall

cheatography.com/carsonmccall/

Not published yet.

Last updated 30th November, 2024.

Page 2 of 2.

Sponsored by **CrosswordCheats.com**

Learn to solve cryptic crosswords!

<http://crosswordcheats.com>