

Adverse Reactions

Negative: Positive

Increase in BP	Increase Concentration
Sudden Stroke	Improved Performance

Heart Attack

Death

Diminish Appetite

Information

Generic Name:	Brand Name:	Classification:
---------------	-------------	-----------------

d-amphetamine
Psychostimulant

l-amphetamine

Clinical Use

Used to treat

ADHD; Narcolepsy

Composed Of:

Amphetamine Salts: Racemic Amphetamine Aspartate Monohydrate, Racemic Amphetamine Sulfate, Dextroamphetamine Saccaride and Dextroamphetamine Sulfate

Purpose

Stimulates the brain and increases the attention span as well as the concentration by increasing the amount of dopamine and norepinephrine in the brain. Adderall acts as a potent dopamine reuptake inhibitor and norepinephrine reuptake inhibitor.

Addiction Potential

Adderall will directly affect the mesolimbic reward pathway in an individual's brain. As a result of this function, **Adderall has a relatively high potential for addiction and abuse**, particularly if the drug is abused or taken by individuals who are not classified with the aforementioned conditions.

Age related dosage side effects

In children 6 to 12 years old, side effects may include:

loss of appetite

insomnia

stomach pain

nausea and vomiting

fever

nervousness

In teens, the most common side effects include:

insomnia

stomach pain

nervousness

weight loss

Side effects in adults may include:

loss of appetite

insomnia

Age related dosage side effects (cont)

nausea

anxiety

dry mouth

weight loss

headache

agitation

dizziness

fast heart rate

diarrhea

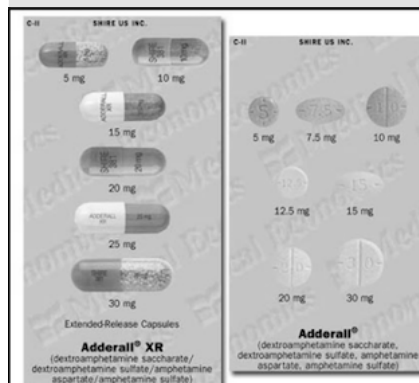
weakness

urinary tract infections

Note

For those individuals who take and experience adverse side effects with Ritalin, Adderall is often recommended as an effective substitute.

Pictures:



Symptoms of Withdrawal

Intense craving for more Adderall. You might be unable to feel normal without it.

Sleep problems. Some people alternate between insomnia (trouble falling or staying asleep) and sleeping too much.

Intense hunger

Anxiety and irritability

Panic attacks

Fatigue or lack of energy

Unhappiness

Depression

Phobias or panic attacks

Suicidal thoughts

How does it work

Extended Release:

The pill achieves maximum plasma concentration in roughly seven hours. When ingested, the extended formulation of Adderall uses the Microtol extended-release delivery system, which incorporates two types of beads into the subject's system. The first hoard of beads dissolves immediately, releasing half of the medication, while the second set dissolves at a slower rate, releasing the medication four hours later.

Instant Release:

Reaches maximum plasma concentration within three hours.

High Dosage; Chronic Intoxication

Feelings of euphoria and excitement

Severe dermatosis (a skin condition)

Insomnia

Hyperactivity

Irritability

Changes in personality

Do not take if certain medical conditions

heart disease

high blood pressure

hardening of the arteries

hyperthyroidism

glaucoma

Similar to other powerful stimulant drugs

Meth

Cocaine

C

By **brandidavis0**

cheatography.com/brandidavis0/

Not published yet.

Last updated 27th May, 2018.

Page 2 of 2.

Sponsored by **ApolloPad.com**

Everyone has a novel in them. Finish Yours!

<https://apollopad.com>