

Properties for Resource Management		Key Script Include	
com.snc.resource_management.default_schedule	The schedule using which the resource hours are calculated	ResourcePlan	
com.snc.resource_management.show_week_month_toggle	Allows to toggle between week and month*		
com.snc.resource_management.max_duration_resource_finder	Max allowed duration for which resource details are shown		
com.snc.resource_management.use_budget_reference_rates	if yes then budget Reference rates are used, else exchange rates are used to calculate resource cost		
com.snc.resource_management.percentage_allocation_normal	Threshold calculation to treat whether the employee not fully utilized		
com.snc.resource_management.percentage_allocation_warning	Max allowed allocation, post which report will show oragne indicating limited availability		
com.snc.resource_management.average_daily_fte**	Amount of hours for all resources, set globally overridden by field on sys_user table or Group table		
com.snc.resource_management.allocation_interval_minutes	Default duration for calendar event for resource		
com.snc.resource_management.first_day_of_week	First day of the week, to ensure correct timecard creation		
com.snc.resource_management.run_state_changes_async	Allows cancellation and Allocation to run in ASYNC		
com.snc.resource_management.exclude_events_from_schedule	Events to avoid Capacity Calculation ex time_off		
com.snc.resource_management.calendar_show_soft_allocations	Allows either RM or All to see softbookin in Calendar		
com.snc.resource_management.number_of_records_to_fetch_at_a_time	Amount of records to be pulled into the resource Grid(specific to London Release)		
<p><i>*Applicable to Resource Grid, which is London release functionality.</i></p> <p><i>**Both FTE Value and the schedule should be in SYNC always.</i></p>			
		Major Tables Involved	
		resource_plan	Allows to Plan Resource user or group
		requested_allocation	For the period of resource plan the requested available FTEs
		resource_allocation	Records are created for Soft and updated resource for each week in requested period
		resource_allocation_daily	These records are associated with the Resource Allocation is shown for the RM
		resource_aggregate_daily	The records are created for each user for allocation and availability
		resource_aggregate_weekly	The records are created for each user for allocation and availability
		resource_aggregate_monthly	The records are created for each user for allocation and availability
		Key Roles Involved in Resource Management	
		resource_manager	This treats an end user has Resource Manager role resource Plans
		resource_user	This role helps the end user to read and update resource
		pps_resource	One of the major roles where the user is treated as resource, it also updates the capacity and availability

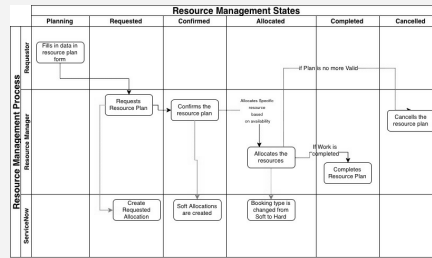


By **Bibin Gokuldas** (bibingokuldas)
cheatography.com/bibingokuldas/
bibingokuldas.com/

Not published yet.
 Last updated 26th October, 2018.
 Page 1 of 2.

Sponsored by **ApolloF**
 Everyone has a novel idea
<https://apollopad.com>

Process Flow



By **Bibin Gokuldas** (bibingokuldas)
cheatography.com/bibingokuldas/
bibingokuldas.com/

Not published yet.
 Last updated 26th October, 2018.
 Page 2 of 2.

Sponsored by **ApolloF**
 Everyone has a novel i
<https://apollopad.com>