

Properties for Resource Management

com.snc.resource_management.default_schedule	The schedule using which the resource hours are calculated
com.snc.resource_management.show_week_month_toggle	Allows to toggle between week and month*
com.snc.resource_management.max_dur_resource_finder	Max allowed duration for which resource details are shown
com.snc.resource_management.use_budget_reference_rates	if yes then budget Reference rates are used, else exchange rates are used to calculate resource cost
com.snc.resource_management.percentage_allocation_normal	Threshold calculation to treat whether the employee not fully utilized
com.snc.resource_management.percentage_allocation_warning	Max allowed allocation, post which report will show oragne indicating limited availability
com.snc.resource_management.average_daily_fte**	Amount of hours for all resources, set globally overridden by field on sys_user table or Group table
com.snc.resource_management.allocation_interval_minutes	Default duration for calender event for resource
com.snc.resource_management.first_day_of_week	First day of the week, to ensure correct timecard creation
com.snc.resource_management.run_state_changes_async	Allows cancellation and Allocation to run in ASYNC
com.snc.resource_management.exclude_events_from_schedule	Events to avoid Capacity Calculation ex time_off
com.snc.resource_management.calendar_show_soft_allocations	Allows either RM or All to see softbookin in Calender
com.snc.resource_management.number_of_records_to_fetch_at_a_time	Amount of records to be pulled into the resource Grid(specific to London Release)

*Applicable to Resource Grid, which is London release functionality.

**Both FTE Value and the schedule should be in SYNC always.

Key Script Include

ResourcePlan

Major Tables Involved

resource_plan	Allows to Plan Resource user or group
requested_allocation	For the period of resource plan the requested allocations are created based on available FTEs
resource_allocation	Records are created for Soft and updated during the Hardbooking for each resource for each week in requested period
resource_allocation_daily	These records are associated with the Resource Allocation, where a daily Allocation is shown for the RM
resource_aggregate_daily	The records are created for each user for each day indicating capacity, utilization and availability
resource_aggregate_weekly	The records are created for each user for each week indicating capacity, utilization and availability
resource_aggregate_monthly	The records are created for each user for each month indicating capacity, utilization and availability

Key Roles involved in Resource Management

resource_manager	This treats an end user has Resource Manager who has the ability to accept / reject resource Plans
resource_user	This role helps the end user to read and update resource plan whenever needed
pps_resource	One of the major roles where the user is treated as Resource for Resource Management, it also updates the capacity and availability of Users

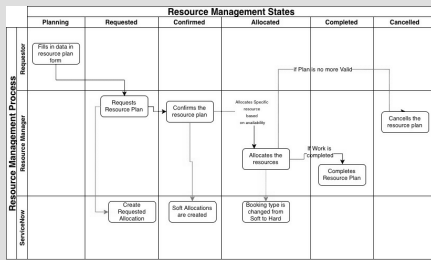


By **Bibin Gokuldas**
(bibingokuldas)

Not published yet.
Last updated 26th October, 2018.
Page 1 of 2.

Sponsored by **Readability-Score.com**
Measure your website readability!
<https://readability-score.com>

Process Flow



By **Bibin Gokuldas**
(bibingokuldas)

Not published yet.
Last updated 26th October, 2018.
Page 2 of 2.

Sponsored by **Readability-Score.com**
Measure your website readability!
<https://readability-score.com>