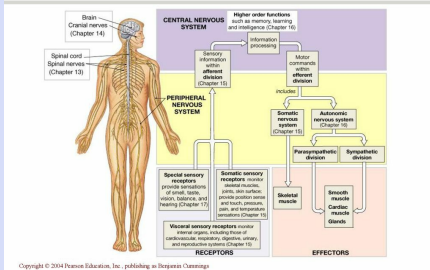


Differentiate Divisions Of Nervous System (Pt 1):

Functional Overview of the Nervous System



Three Main Functions:

- 1) Monitors the body's internal & external environment
- 2) Integrates sensory information
- 3) Coordinates voluntary & involuntary responses

Differentiate Divisions Of Nervous System (Pt 2)

Central Nervous System (CNS)

- Includes the brain & spinal cord
- Integrates & coordinates sensory processing and motor transmission
- Location of higher functions like intelligence, memory & emotion

Peripheral Nervous System

- All neural tissue outside the Central Nervous System
- Communication connection between the Central Nervous System & the rest of the body

Peripheral Nervous System Functional Divisions:

>Afferent Division - Sensory

- Brings information to the Central Nervous System from receptors in the body tissues and organs.

- **Receptors** - sensory structures that detect changes in the environment or respond to specific stimuli

>Efferent Division - Motor

Differentiate Divisions Of Nervous System (Pt 2) (cont)

- Carries information away from the Central Nervous System to muscles and glands.

These organs and tissues are called **effectors**.

>Efferent Division Subdivisions

- Somatic Nervous System

- Control skeletal muscle contractions
- **Voluntary Contractions** - under conscious control (lifting glass of water to lips)

- **Involuntary Contractions** - Simple or complex movements controlled at the subconscious level. (placing hand on hot stove and pulling back immediately) this is also known as **reflex**

