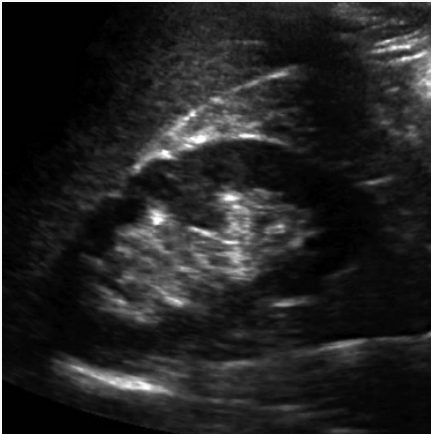
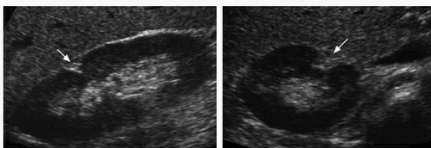


Hypertrophied Column of Bertin



Column of Bertin extends into sinus.

Junctional Parenchymal Defect



Triangular echogenic area located anterior and superior to the kidney.

Duplicated Collecting System



The sinus is divided into 2. With this in mind, 2 ureters can develop.

Horseshoe Kidney



Kidneys are connected; typically at the lower poles.



By Alyssabruestle1

cheatography.com/alyssabruestle1/

Not published yet.

Last updated 28th November, 2022.

Page 1 of 1.

Sponsored by [Readable.com](https://readable.com)

Measure your website readability!

<https://readable.com>